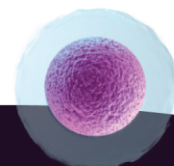


RoslinCT – Renewable Electricity Statement (2024)

RoslinCT has been recording environmental and social data since 2022, which includes data on our energy consumption and proportion of renewable energy consumed. In 2023, we began purchasing renewable electricity across our facilities by transitioning to green tariffs and purchasing Energy Attribute Certificates (EACs). In 2024 we continued to do so to cover 100% of our electricity usage across all sites. Electricity consumption data and source of renewable supply is shown in the table below:

<i>Facility</i>	<i>2024 Electricity Consumption</i>	<i>%</i>	<i>Description</i>
<i>Hopkinton</i>	2,519,040	71.56	Renewable energy (RECs) sourced from Sir Adam Beck II hydroelectric station
<i>NINE</i>	74,938	2.13	Renewable energy (REGOs) sourced from Slieve Kirk wind farm
<i>Biocube 1</i>	12,780	0.36	Renewable energy (REGOs) sourced from Slieve Kirk wind farm
<i>Biocube 2</i>	388,795	11.05	100% green tariff (REGO) through energy supplier
<i>Shawfair</i>	26,910	0.76	100% green tariff (REGO) through energy supplier
<i>Technopole</i>	124,510	3.54	100% renewable power supplied through virtual PPA with Ecotricity
<i>IRR North</i>	288,909	8.21	100% green tariff (REGO) through University of Edinburgh energy supplier
<i>Biostore</i>	84,112	2.39	Renewable energy (REGOs) sourced from Slieve Kirk wind farm



Renewable Energy Guarantees of Origin (REGOs) and Renewable Energy Certificates (RECs) are regional examples of Energy Attribute Certificates (EACs). REGOs are purchased in the United Kingdom, RECs are purchased in the United States and Canada. An EAC is produced when one MWh of power is generated from a renewable source. That EAC can be sold either together with the power (via a green tariff) or separately to another party (ie, a consumer, often through a broker). Both mechanisms are recognised by international energy standards and sale of EACs is regulated in the UK by OfGEM and in the US by the EPA.

Our priority is to implement energy efficiency measures to reduce our overall energy demand, and energy intensity. We have also determined that there is a need to go further in limiting the impacts from climate change by investing in renewable forms of energy now and we are proud to say that for 2024 RoslinCT procured only 100% renewable electricity.

