

## RoslinCT Modern Slavery Statement

For the Financial Year Ending 31 December 2025

### 1. Introduction

This Modern Slavery Statement has been prepared in accordance with Section 54 of the UK Modern Slavery Act 2015 (the "Act"). It sets out the steps that **RoslinCT** has taken, and is continuing to take, to prevent modern slavery and human trafficking in our business operations and supply chains. RoslinCT operates as a global **contract development and manufacturing organisation (CDMO)** specialising in advanced cell and gene therapy services, headquartered in Edinburgh, UK, with additional facilities and services in Hopkinton, MA.

### 2. Organisational Structure and Supply Chains

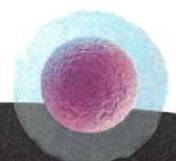
RoslinCT is a trading name of RoslinCT US Holdings LLC (a Delaware registered company having its registered address at 97 South Street, Hopkinton, 01748, MA) and Roslin Cell Therapies Limited and (a company registered in Scotland under company number SC512315 and having its registered office at NINE, Edinburgh BioQuarter, 9 Little France Road, Edinburgh, EH16 4UX).

RoslinCT provides **innovative process and analytical development, cGMP clinical and commercial manufacturing, gene editing, and cell therapy services** to partners internationally. We operate across scientific development, technical transfer, and manufacturing services for biopharmaceutical companies and research organisations.

Our supply chains include procurement of scientific materials, laboratory equipment, equipment maintenance services, professional services, IT and facility services, and other operational support.

### 3. Policies Related to Modern Slavery and Human Trafficking

RoslinCT is committed to conducting business ethically and with respect for human rights. Our policies (including Anti-Bribery & Corruption and Human Rights policies, Supplier Social & Environmental Impact Assessment, and Corporate Social Responsibility policies) prohibit and risk assess our exposure to the use of forced labour, human trafficking, and any forms of modern slavery within our operations or through our suppliers. These policies reflect our commitment to ethical business practices and compliance with the Act.



#### 4. Due Diligence Processes

We use a risk-based due diligence approach when engaging with suppliers and partners. This includes:

- Assessing potential suppliers against compliance, ethical standards, and regulatory requirements.
- Incorporating ethical conduct criteria into contracts and supplier onboarding processes.
- Requesting suppliers to undertake a self-assessment against human rights and labour standards.

We are continuing to refine and formalise these processes to strengthen transparency and oversight across our supply chain.

#### 5. Risk Assessment and Management

RoslinCT recognises that risk exposure varies by geography, sector, and supply category.

We evaluate supplier risk profiles based on:

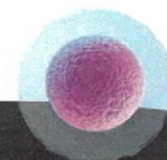
- Sector and supplier activity type;
- Jurisdictional and operational risk factors;
- Value of expenditure with supplier during calendar year

We continue to prioritise areas of higher risk for additional review and, where feasible, supplier engagement to ensure compliance with ethical and legal standards.

#### 6. Performance Indicators

RoslinCT monitors our performance in mitigating modern slavery risks through:

- Internal reviews of supplier risk assessments (commitment to risk assess 80% of our supply chain by spend by 2030; delivered incrementally per year).



- Training participation records. All employees complete an Anti-Bribery & Corruption Induction as part of onboarding and are expected to complete annual training covering topics including Anti-Bribery & Corruption, Culture of Compliance, conflicts of interest, whistleblowing and anti-money laundering.
- Contract and policy updates that integrate ethical conduct expectations.

We will continue to refine meaningful KPIs over time.

### 7. Training and Awareness

We provide training for all departments and awareness sessions for our Board of Directors on responsible sourcing, ethical conduct, and modern slavery awareness. This supports better identification and escalation of potential risk issues.

### 8. Board Approval and Sign-Off

This statement has been approved by the Board of Directors of RoslinCT and is signed on behalf of the leadership team. RoslinCT will review and update this statement annually, as required by law and best practice.

Approved by:     PAC      
Name:     PETER COLMAN      
Title:     CEO      
Date:     22 APRIL 2026    

