

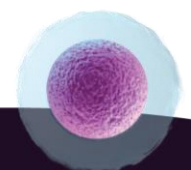
RoslinCT – Renewable Electricity Statement (2023)

RoslinCT has been recording environmental and social data since 2022, which includes data on our energy consumption and proportion of renewable energy consumed. 2023 was the first full calendar year of data monitoring since the acquisition and integration of Lykan Bioscience in Hopkinton, MA.

In 2023, across our facilities we have monitored our non-renewable and renewable electricity consumption and where possible have transitioned to green tariffs and purchased renewable energy to cover 100% of usage.

Our consumption across our facilities is shown in the table below:

<i>Facility</i>	<i>2023 Electricity Consumption kWh</i>	<i>%</i>	<i>Description</i>
<i>Hopkinton</i>	2,443,199	72.96	Renewable energy (RECs) sourced from Sir Adam Beck II hydroelectric station
<i>NINE</i>	72,649	2.17	Renewable energy (REGOs) sourced from Kype Muir Extension wind farm
<i>Biocube 1</i>	12,572	0.36	Renewable energy (REGOs) sourced from Kype Muir Extension wind farm
<i>Biocube 2</i>	361,382	10.79	100% green tariff (REGO) through energy supplier
<i>Shawfair</i>	37,724	1.13	100% green tariff (REGO) through energy supplier
<i>Technopole</i>	95,228	2.84	100% renewable power supplied through virtual PPA with Ecotricity
<i>IRR North</i>	268,911	8.03	100% green tariff (REGO) through the University of Edinburgh energy supplier
<i>Biostore</i>	57,180	1.71	Renewable energy (REGOs) sourced from Kype Muir Extension wind farm



Renewable Energy Guarantees of Origin (REGOs) and Renewable Energy Certificates (RECs) are regional examples of Energy Attribute Certificates (EACs). REGOs are purchased in the United Kingdom, RECs are purchased in the United States and Canada. An EAC is produced when one MWh of power is generated from a renewable source. That EAC can be sold either together with the power (via a green tariff) or separately to another party (ie, a consumer, often through a broker). Both mechanisms are recognised by international energy standards and sale of EACs is regulated in the UK by OfGEM and in the US by the EPA.

Our priority is to implement energy efficiency measures to reduce our overall energy demand, and energy intensity. We have also determined that there is a need to go further in limiting the impacts from climate change by investing in renewable forms of energy now and we are proud to say that for 2023 RoslinCT procured only 100% renewable electricity.¹

¹ Biocube 2 and Shawfair moved to green tariffs from April 2023. For Jan-Mar 2023 the electricity supplied to these facilities was a mix of energy sources supplied through the National Grid by Total Power, which included an element of natural gas.

